

Interfacing with IBM® Lotus® Domino™ using POP3

Project	E-mailmanagement
Category	How-to, Integration, E-mail
Status	Final
Version	1.1
Date	30-11-2008

Table of Contents

Introduction	3
Enable the POP3 service	4
Starting and stopping the POP3 service	5
Add Mail-in database.....	6
Enable journaling	7
Create an account.....	8
Create a Mail Database.....	9
Create an ACL entry.....	10
Define a journaling rule	11
Configure Semantica PopReader	13
Starting and stopping the Semantica PopReader	14



Introduction

There are several ways to archive and/or manage e-mail with Semantica. This document describes the implementation of mail journaling on an IBM® Lotus® Domino™ server to a mailbox that is popped by the Semantica PopReader. Messages are processed by the Semantica MailArchiver, which places them into the Semantica Database.

This document assumes a working IBM® Lotus® Domino™ server and access to the Domino Administrator application with administrator privileges. The following steps need to be executed for the interface to work:

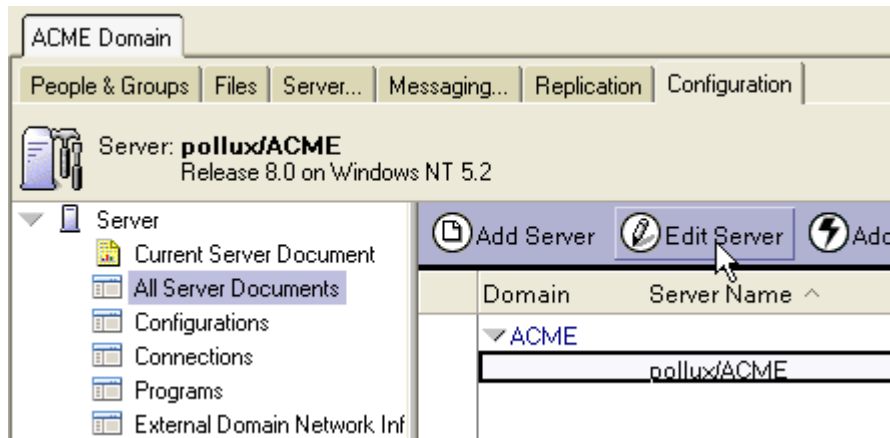
1. Enable the POP3 service
2. Starting and stopping the POP3 service
3. Add Mail-in database
4. Enable journaling
5. Create an Account
6. Create Mail database
7. Create an ACL entry
8. Define a journaling rule
9. Configure the Semantica PopReader
10. Starting and stopping the Semantica PopReader

These steps are described in detail below. As a reference the Domino Administrator documentation was used and excerpts are taken from that. The screenshots are captured from a IBM® Lotus® Domino™ server Release 8.0 installation on a Windows 2003 Server platform.

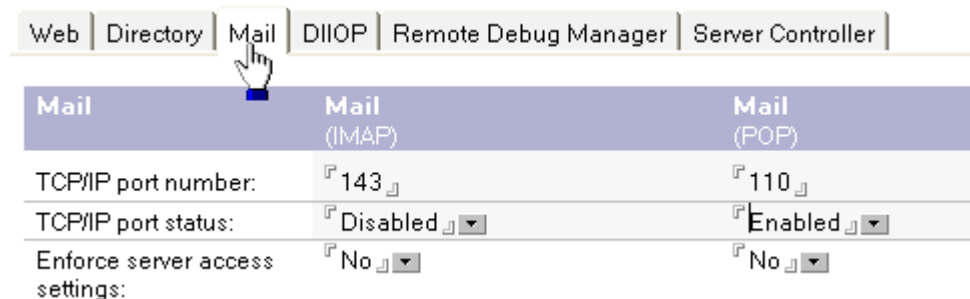
Enable the POP3 service

IBM® Lotus® Domino™ server can be equipped with a POP3 service during installation, or this service can be enabled afterwards.

1. From the Domino Administrator, click the Configuration tab and then open the Server document for the server that should run the POP3 service;



2. Click the Ports, Internet Ports and Mail tabs successively;
3. To enable the default TCP/IP port, in the Mail (POP) column, change the value of the TCP/IP port status field to Enabled;



4. Click Save and Close.

Starting and stopping the POP3 service

You can load the POP3 service manually or start it automatically when you start the IBM® Lotus® Domino™ server.

To do this	Perform this task
Start the POP3 service manually	Enter the following command at the console: load POP3
Start the POP3 service automatically when you start the Domino server	Edit the ServerTasks setting in the NOTES.INI file to include the command POP3. IBM® Lotus® Domino™ adds the POP3 task by default to the NOTES.INI file if you select the POP3 service during installation.
Stop the POP3 service	Enter the following command at the console: tell POP3 quit

Example ServerTasks setting in NOTES.INI:

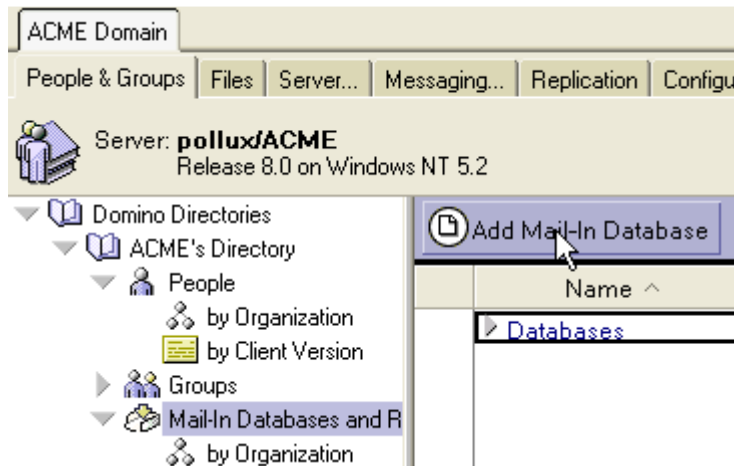
```
ServerTasks=Update,Replica,Router,AMgr,AdminP,CalConn,Sched,HTTP,POP3,RnRMgr
```



Add Mail-in database

The mail-in database is designed to allow mail to be received by a database that is set up to receive mail, without the mail being added to a person's mail file.

1. From the People & Groups tab of the Domino Administrator, choose the Mail-In Databases Resources view;
2. Click Add Mail-In database;



3. On the Basics tab, complete the fields;

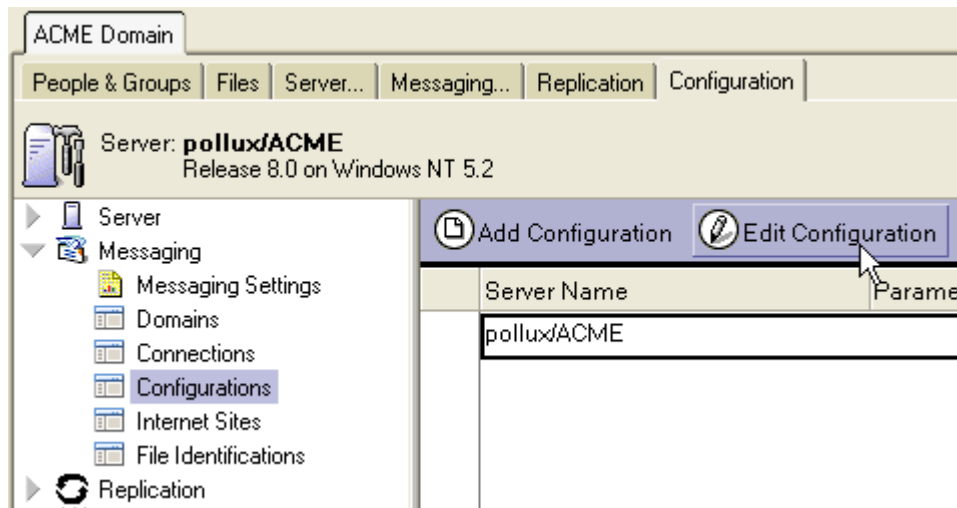
Basics | Other | Comments | Administration

Basics		Location	
Mail-in name:	<input type="text" value="Journal Mail-in"/>	Domain:	<input type="text" value="ACME"/>
Description:	<input type="text" value="Journal for ACME"/>	Server:	<input type="text" value="polluxACME"/>
Internet Address:	<input type="text" value=""/>	File name:	<input type="text" value="journal"/>
Internet message storage:	<input type="text" value="Prefers MIME"/>		
Encrypt incoming mail:	<input type="text" value="No"/>		

4. Click Save & Close.

Enable journaling

1. From the Domino Administrator, click the Configuration tab and expand the Messaging section;
2. Click Configurations;
3. Select the Configuration Settings document for the mail server or servers where you want to journal mail, and click Edit Configuration;



4. Click the Router/SMTP, Advanced , Journaling tabs successively;
5. Complete the fields;

Journaling | Commands and Extensions | Controls

Basics

Journaling:	<input checked="" type="checkbox"/> Enabled
Field encryption exclusion list:	<input checked="" type="checkbox"/> Form; From; Principal; PostedDate
Method:	<input checked="" type="checkbox"/> Send to mail-in database
Mail Destination:	<input checked="" type="checkbox"/> Journal Mail-in
Journal Recipients:	<input checked="" type="checkbox"/> Disable

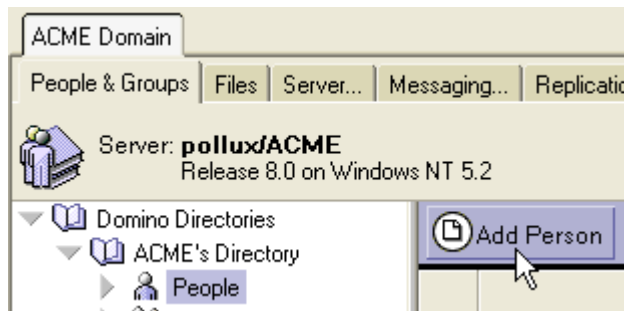
***Reminder: A journaling mail rule is needed to properly enable message journaling.

6. Click Save & Close.

Create an account

To access mail files on the IBM® Lotus® Domino™ server, a POP3 user must have a Person document in the Domino Directory.

1. From the Domino Administrator, click the People & Groups tab;
2. Select Domino Directories - Address Book – People;
3. If no Person document exists for this user, click Add Person to create a new Person document;



4. Fill in the appropriate fields;

Basics	Mail
First name: <input type="text"/>	Mail system: <input type="text" value="POP or IMAP"/>
Middle name: <input type="text"/>	Domain: <input type="text" value="ACME"/>
Last name: <input type="text" value="DocsDB"/>	Mail server: <input type="text" value="pollux/ACME"/>
User name: <input type="text" value="docsdb"/>	Mail file: <input type="text" value="journal"/>
Alternate name: <input type="text"/>	Forwarding address: <input type="text"/>
Short name/UserID and/or Internet address for R4.x SMTP MTA: <input type="text"/>	Internet address: <input type="text"/>
Personal title: <input type="text"/>	Format preference for incoming mail: <input type="text" value="Prefers MIME"/>
Generational qualifier: <input type="text"/>	When receiving unencrypted mail, encrypt before storing in your mailfile: <input type="text" value="No"/>
Internet password: <input type="password" value="Enter Password"/> (GT+KSy+kZTTtUKB9yox)	
Preferred language: <input type="text"/>	

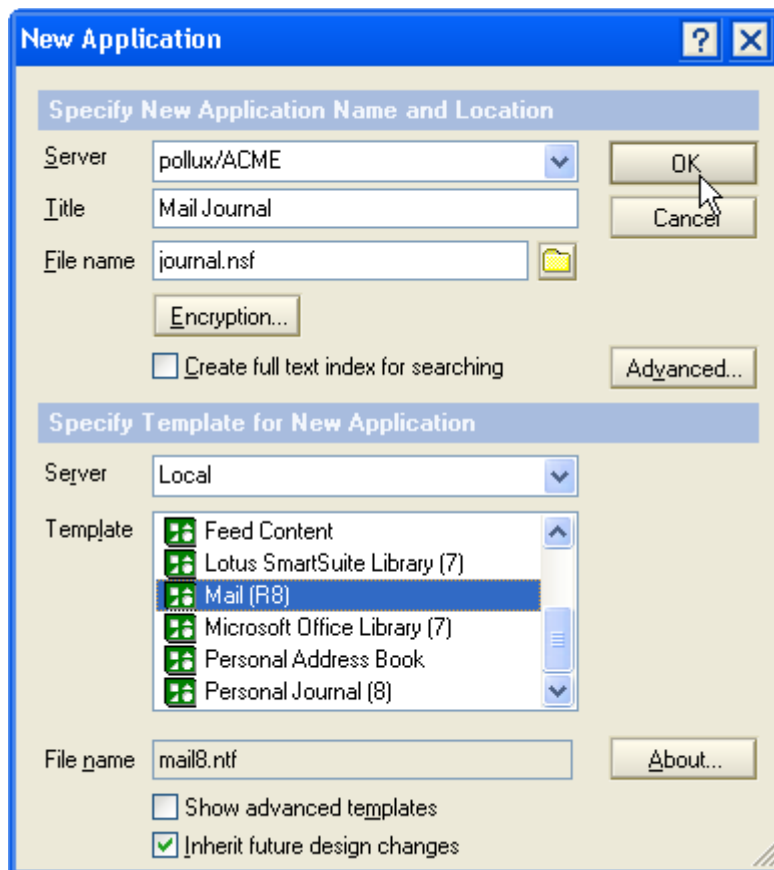
5. Click Save & Close.

Create a Mail Database

Each POP3 user must have a mail file on the IBM® Lotus® Domino™ server. You can create the mail file automatically during user registration, or you can manually create a mail file. If the user is already a registered IBM® Lotus® Notes® user who has an existing Notes mail file and if you set up the Person document to use POP3 as the mail system, the user can use a POP3 client to access the mail file.

If a user does not have an existing mail file on a Domino server, create a new mail one as described in the following procedure.

1. Choose File, Application, New or press Control-N;
2. Fill in the fields;

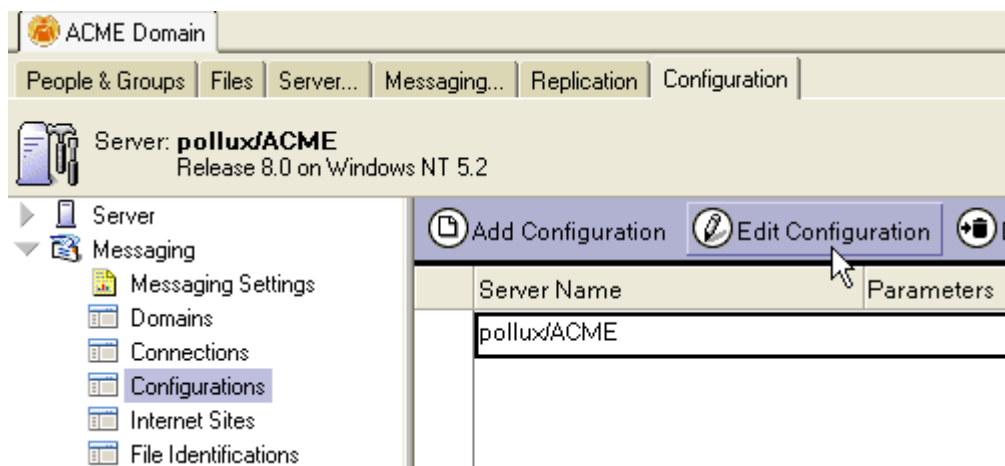


3. From the list of template names, select Mail 8 with the filename MAIL8.NTF, and click OK.

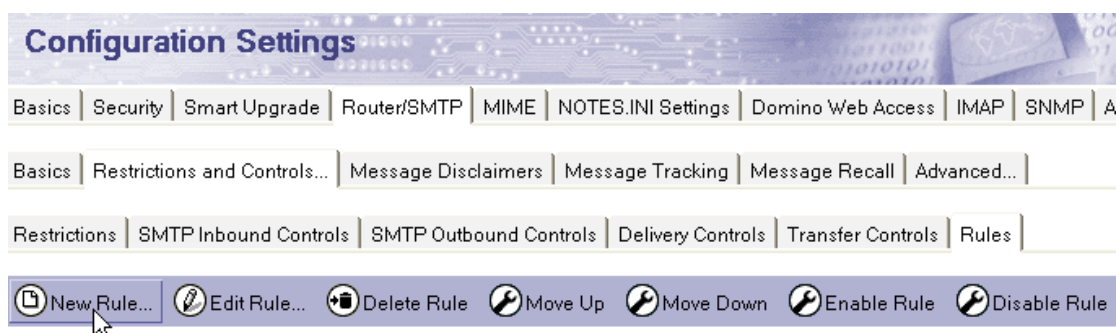
Define a journaling rule

You can create content filtering rules for a server that define actions to take on certain messages. When a new message that meets a specified condition is deposited in a mailbox, a possible action can be to journal this message.

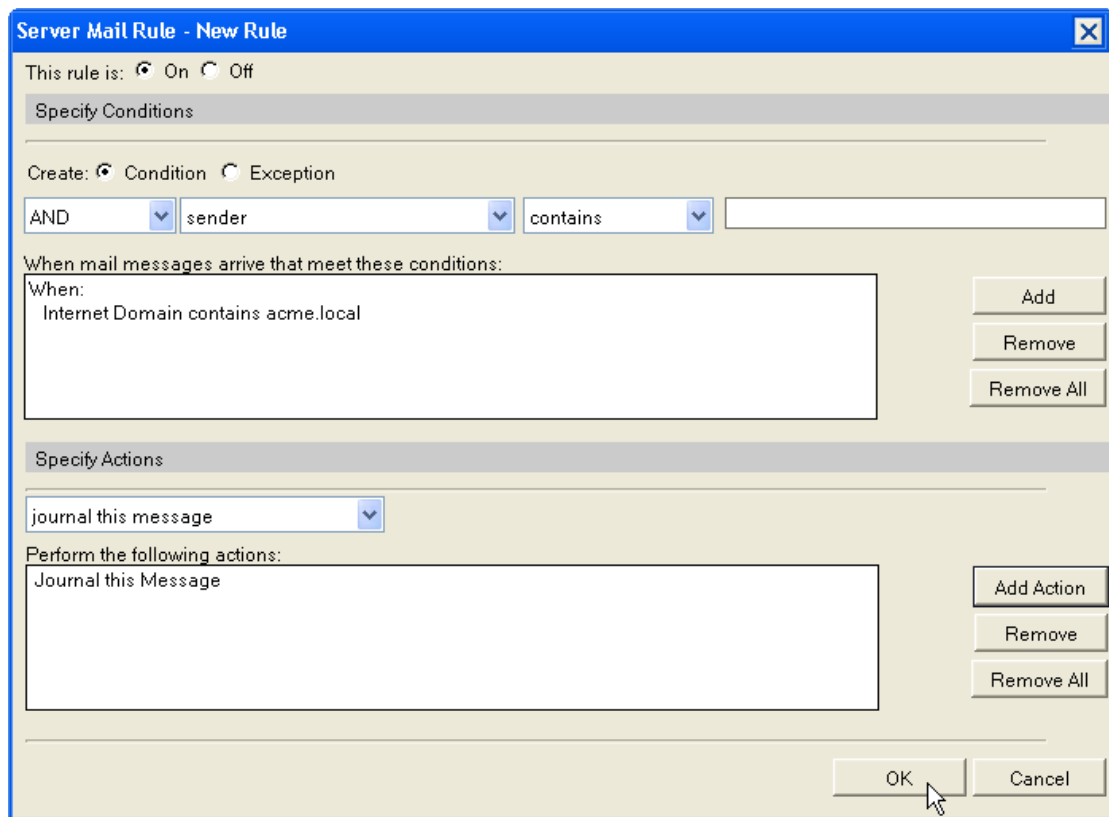
1. From the Domino Administrator, click the Configuration tab and expand the Messaging section;
2. Click Configurations;
3. Select the Configuration Settings document for the mail server or servers you want to administer, and click Edit Configuration;



5. Click the Router/SMTP, Restrictions and Controls and Rules tabs successively;
6. Click New Rule;



7. In the Specify Conditions section of the New Rule dialog box, set the criteria the server uses to determine whether to apply a rule to a given message, e.g. The internet domain contains acme.local;
8. Click Add;
9. Specify action 'journal this message' and click Add Action;



11. To save the rule and put it into effect immediately, click OK;
12. Click Save & Close.

Note: The Configuration Settings document displays new mail rules only if the document has been previously saved.

When you add a new rule, it takes effect only after the server reloads the mail rules. A reload is automatically triggered if the Server task detects a rule change when performing its routine check of the Configuration Settings document. This check occurs approximately every five minutes.

You can force the server to reload rules, using the console command: set rules

Configure Semantica PopReader

Semantica PopReader is designed to access POP3 mailboxes like the one created previously. In order to access this mailbox the following information is needed:

- User/Accountname (e.g. Semantica)
- Password (e.g. S4MT6H!%YA^UzqGw&Y"vVHU+)
- Mailserver (e.g. pollux)
- POP3 Port (default 110)

This information is added to the Semantica PopReader configuration file POPREADER.XML located in the **conf** directory of the Semantica installation. A sample of a configuration file is listed below.

```
<?xml version="1.0" encoding="UTF-8"?>
<!--
    (c) Copyright 2008, SEMANTICA B.V. All rights reserved.
    This software is the proprietary information of SEMANTICA B.V.
    Settings for the Semantica mail archivers.
-->
<config>
  <!-- The interval at which to check the mail account -->
  <interval>10m</interval>
  <!-- The host of the POP server -->
  <host>pollux</host>
  <!-- The port of the POP server -->
  <port>110</port>
  <!-- The username of the mail account -->
  <user>Semantica</user>
  <!-- The password of the mail account -->
  <password>S4MT6H!%YA^UzqGw&Y"vVHU+</password>
  <!-- Host where the mail archiver is running -->
  <mailarchiver-host>castor</mailarchiver-host>
  <!-- Port where the mail archiver is running -->
  <mailarchiver-port>8185</mailarchiver-port>
  <!-- Should the messages be deleted from the server -->
  <delete>true</delete>
  <!--
    The maximum number of messages to process at a time
    0 means all messages at once. -->
  <max>0</max>
  <!--
    Do not write messages to the mailarchiver but
    write them to a directory.
  <dir></dir>
  -->
  <!--
    Rules can be defined here.

    The email will be send to the email archiver config for
    the first matching rule. When no rules match the email
    will not be archived.
  -->
  <rules>
    <rule config="MAIL">
      <equals field="X-Semantica" value=""/>
    </rule>
  </rules>
</config>
```

Starting and stopping the Semantica PopReader

The Semantica PopReader can be started in several ways. The process will run in the background as daemon (Unix)/service (Windows) or in the foreground as a console operation.

Note: all scripts are located in the **bin** directory of the Semantica Installation. The Windows scripts are used as examples. Substitute `.bat` for `.sh` on Unix

```
C:\Program Files\Semantica\bin> Semantica.bat start popreader
```

or

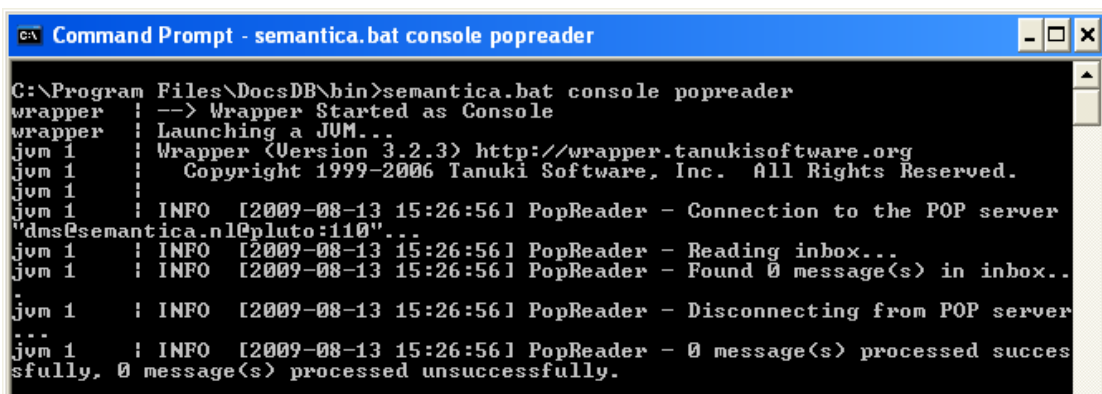
```
C:\Program Files\Semantica\bin> Semantica.bat stop popreader
```

to respectively start and stop the Semantica PopReader process.

Starting the Semantica PopReader Process in the foreground type

```
C:\Program Files\Semantica\bin> Semantica.bat console popreader
```

and output is shown like below.



```
Command Prompt - semantica.bat console popreader
C:\Program Files\DocsDB\bin>semantica.bat console popreader
wrapper | --> Wrapper Started as Console
wrapper | Launching a JUM...
jum 1 | Wrapper (Version 3.2.3) http://wrapper.tanukisoftware.org
jum 1 | Copyright 1999-2006 Tanuki Software, Inc. All Rights Reserved.
jum 1 | INFO [2009-08-13 15:26:56] PopReader - Connection to the POP server
"dms@semantica.nl@pluto:110"...
jum 1 | INFO [2009-08-13 15:26:56] PopReader - Reading inbox...
jum 1 | INFO [2009-08-13 15:26:56] PopReader - Found 0 message(s) in inbox..
.
jum 1 | INFO [2009-08-13 15:26:56] PopReader - Disconnecting from POP server
...
jum 1 | INFO [2009-08-13 15:26:56] PopReader - 0 message(s) processed succes
sfully, 0 message(s) processed unsuccessfully.
```

Press Ctrl-C to stop the Semantica PopReader and corresponding batchjob.

On Windows processes are installed as services. You can use the management console application to control the Semantica PopReader process.

